

The logo consists of a solid blue rectangle with the word "HubIT" written in white, bold, sans-serif font. The letters are slightly irregular, with some appearing to be cut out or layered. A small red triangle is positioned to the left of the rectangle, and a light blue square and an orange rectangle are positioned above it, as if they are pieces of paper or tabs sticking out of the top of the box.

HubIT

The tagline is written in a blue, sans-serif font. Above the text is a purple, irregular blob shape. To the right of the text is a green, irregular polygon shape.

**TECHNOLOGY WITH
AND FOR SOCIETY**

HubIT Hungary workshop

Gabriela Mezeiová, CVTI SR

Millenáris Startup Campus

2.7.2019

Budapest



HubIT is the Hub for the whole H2020 RRI approach

HubIT is building a hub to activate and improve constructive and co-creative interactions between Social Sciences and Humanities (SSH) and Information and Communication Technologies (ICT) for delivering Responsible ICT Research and Innovation (RRI)

1 Establish in a collaborative way a **shared understanding** of what it takes for ICT research and innovation to be responsible and inclusive, and how to make it happen;

3 Wide scale **engagement, capacity building and matchmaking** of SSH and ICT researchers and businesses, policy makers and users for identifying key societal needs, ideas and collaborations for practical solutions;

2 Establishing an **evidence base and policy recommendations** for R&I policies measured by key success indicators;

4 Implementing **real collaborations and experimental activities** leading to inclusive and responsible innovations on cutting-edge issues.

RESULT : Inclusive (H2020) ICT innovation ideas and innovations

RESULT: Evidence base for R&I policies (H2020+)

HubIT target groups

SSH RESEARCHERS

Support to implementation of RRI dimension within ongoing projects and new ideas.

Universities, research and competence centres, companies, NGOs and public organisations delivering SSH research and innovation.

POLICY MAKERS

Suggestions for FP RRI approach improvement
Policy recommendations for designig RRI support measures

Policy makers and public administration designing and implementing policy measures and support schemes related to ICT-SSH collaboration and (responsible) ICT research and innovation

ICT DEVELOPERS

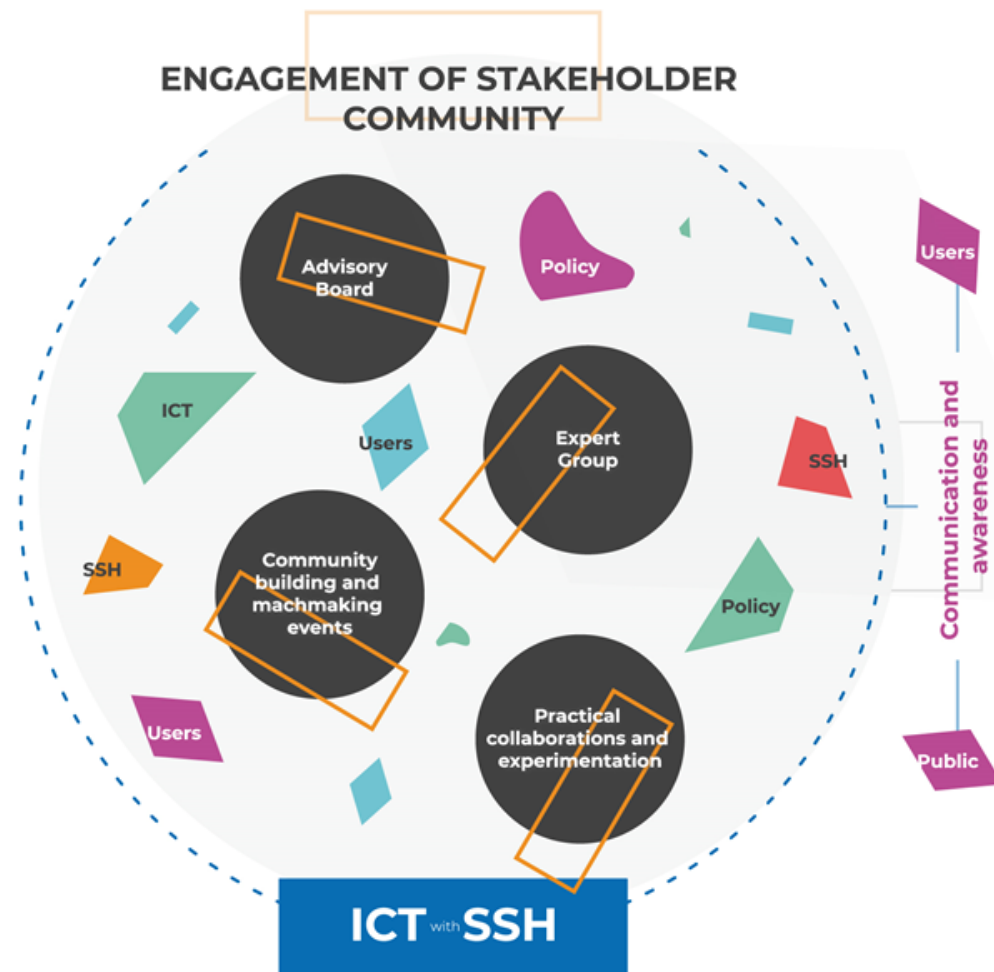
Universities, research and competence centres, NGOs and public organisations delivering ICT research and innovation.

USERS AND GENERAL PUBLIC

Engagement and alignment with their needs

Civil society (NGOs and citizens' initiatives, consumers associations), general public as potential users of ICT innovations

ENGAGEMENT OF STAKEHOLDER COMMUNITY



HubIT

TECHNOLOGY WITH
AND FOR SOCIETY



Welcome to HubIT Metropolis

Resources

About

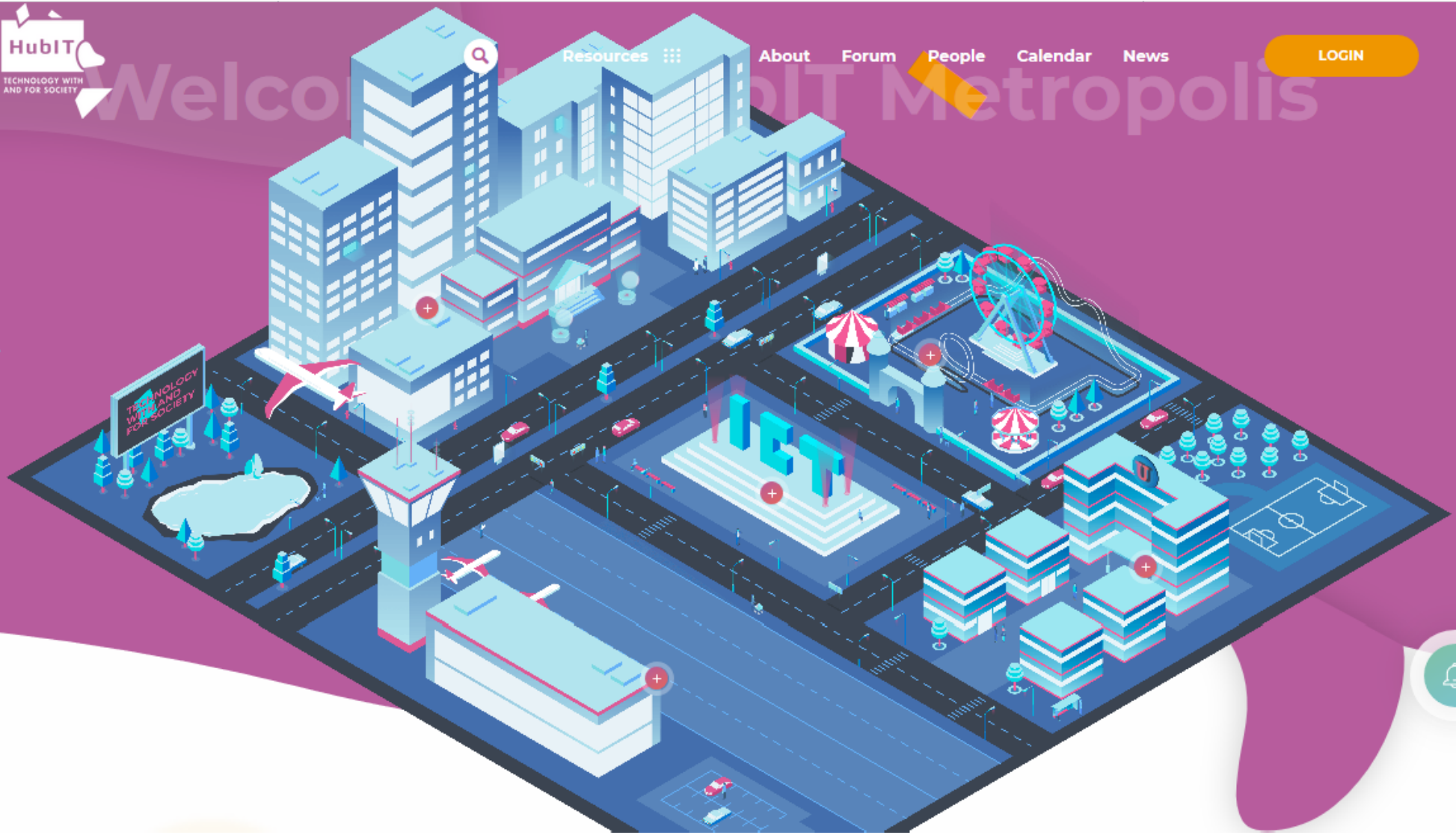
Forum

People

Calendar

News

LOGIN



10 resources of the Metropolis

The HubIT Concept



List of Key Challenges



Ecosystem Mapping



Good Practices
Repository



The HubIT Guidelines



Assessment Tool



Fact Sheets



Key Indicators



Policy Briefs



Social Dashboard



List of Key Challenges

- identifies cross-cutting issues that combine societal relevance with ICT fields of research and innovation
- provides a problem-oriented view, focusing on shared challenges and issues
- few examples of identified challenges:
 - preventing massive job destruction
 - integration of smart robots into the private sphere will alter human behaviours
 - to avoid growing inequality related to AI
 - opening access to public research results for a more inclusive growth
 - ...

Ecosystem Mapping

- Are you looking for:
 - A project partner with the right RRI/SSH expertise?
 - An expert to validate your research outcomes?
 - An engaging speaker at your event?
 - Data to monitor how the public money is spent in the area of RRI/SSH?
- The „Ecosystem Mapping“:
 - Is your guide in the world of RRI in Europe.
 - Serves as a map of the European RRI landscape, including actors and the projects they implement.



Good Practices Repository

- collection of clustered documentation about the successful implementation of RRI principles into the ICT processes
- any good working initiative and procedure (e.g. projects, studies, policies, use cases, success stories, fact sheet, methodologies, on-field activities) to implement RRI
- GPs suggest new ways to plan activities and achieve targets
- GPs can be re-used, by scaling it accordingly to the stakeholders'/users' needs.

The HubIT Guidelines

- hands-on advice on how to better align ICT with societal needs and demands
- guidelines for interdisciplinary and responsible ICT research and innovation
- a method for inclusive hackathons
- **10 tips for how to implement RRI through interdisciplinary collaboration in ICT projects**

Assessment Tool

- questionnaires to assess the RRI commitments and ICT/SSH collaboration potential on the level of the organisation, project, event and the individual
 - the custom questionnaire tool (“Build your questionnaire”) with items to measure process, outcome and perception indicators for the 6 dimensions of RRI
 - additional group of questions designed specifically to study SSH and ICT communities’ perceptions of each other and their readiness to cooperate

Attitudes towards RRI policy

ICT – SSH collaboration

Assessing RRI in Projects

HUBIT ASSESSMENT
QUESTIONNAIRES

BUILD YOUR QUESTIONNAIRE

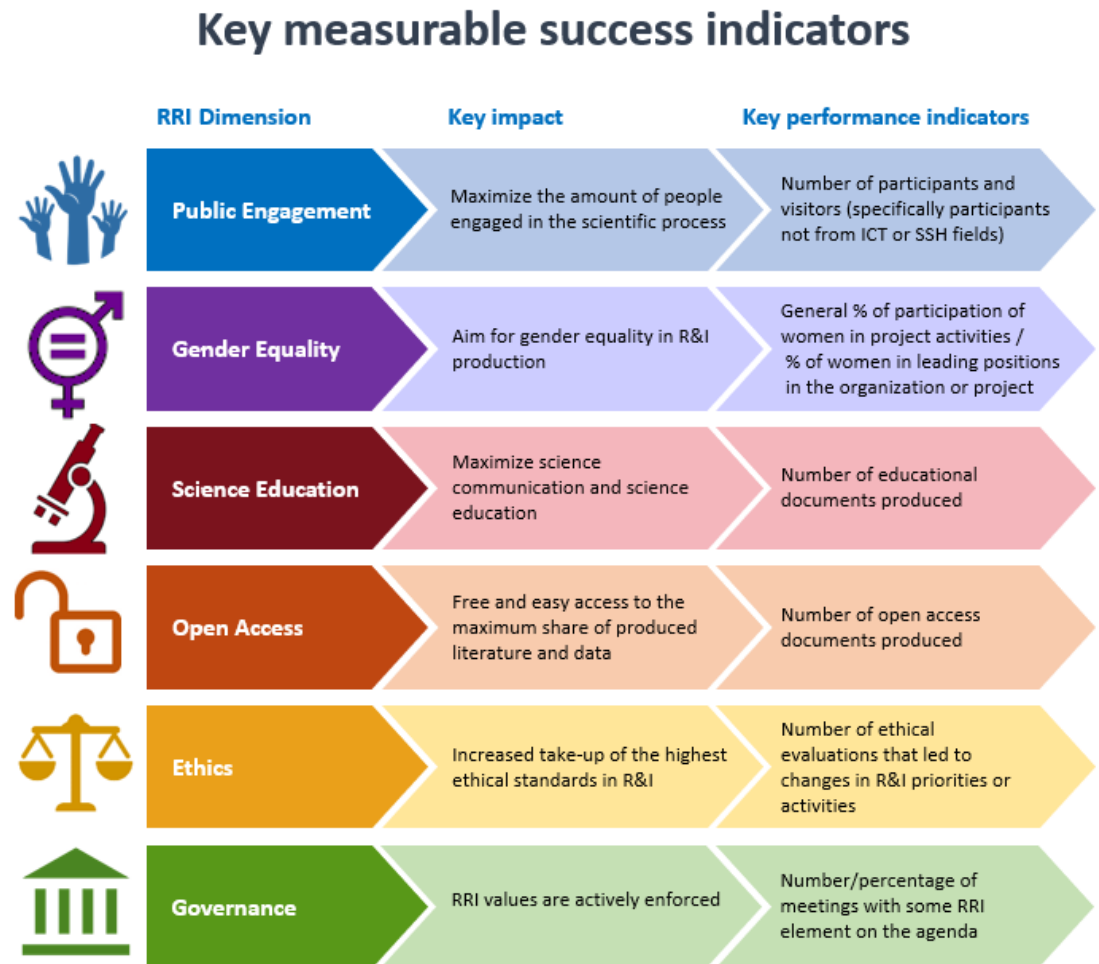
OTHER ASSESSMENT TOOLS

Social Dashboard

- gathers a community of experts, researchers, other users and organisations cooperating in RRI-related activities in H2020 and can also be used in the future program(s)
 - make connections for future collaborations in projects from this field
 - chat with possible future consortium colleagues or make partnerships between projects
 - upload and share files and the results of your projects; share ideas and join the best team for proposals
 - register as a single person or do a registration representing an organisation

Key Measurable Success Indicators

- an overview of relevant measures to evaluate the success of implementing RRI in an organization / project
- RRI Dimensions and related Key impacts and Key performance indicators



HubIT activities

1 Establishing an **European Framework Model for responsible ICT innovation** which is a comprehensive set of jointly developed and used definitions, guidelines and tools for enforcing RRI and SSH issues in ICT research.

3 Facilitating practical collaborations and experimental activities, in order to foster new responsive ICT ideas enriched with SSH and stimulate reflection on cutting-edge issues.

3 European Inclusive Hackathons

1 European Common Ground Camp

3 European Interactive ICT labs

2 Engaging and broadening the European community complemented by an equal increase of RRI knowledge, information sharing, active dialogue and matchmaking:

4 Establish evidence base for R&I policies measured by key success indicators.

Key performance Indicators;

Policy recommendations.

3 Speed-dating events

3 International thematic workshops and networking events

10 National workshops

5 Target group specific events:

3 International policy workshops
1 SSH researcher workshops
1 ICT industries workshops

5 Providing stakeholders at European and international level with information concerning HubIT activities, events and achievements.

Dissemination and communication programme;

Project online platform;

3 annual conferences.

Lets get experimental!

3 kinds of workshops for experts in **new technologies** and experts in **social sciences**:

Designathons

- **Design & Coding in a sprint-like event** developing socially relevant ideas and projects
- 2 days workshop, gathering around 50 participants
- To be held in Vilnius, Bratislava and Berlin

Interactive MakerLabs

- Concrete **practical collaborations making something** and **reflecting** about the making-process
- 2,5 days workshop with around 20 participants
- To be held in Berlin, Bratislava and Tel-Aviv

Common Ground Camp

- develop new project ideas and build new consortia in order to apply for future calls (e.g. H2020) linked to RRI
- 3 days retreat with around 50 participants in a remote location near Bratislava

Join more HubIT events on RRI

Travel costs and accomodation will be reimbursed!

	Sep´19	Oct	Nov	Dec	Jan´20	Feb	Mar	Apr	May	Jun
Designathons	Vilnius		Bratislava			Berlin				
MakerLabs							Berlin	Bratislava	Tel Aviv	
Common Ground Camp										Bratislava

Register at
<https://www.hubit-project.eu/>

Partners



CIVITTA

Civitta Eesti As
Estonia
www.civitta.com



Technische Universitaet Berlin
Germany
www.technik.tu-berlin.de



Tel Aviv University
Israel
english.tau.ac.il/



Link Campus University
Italy
www.unilink.it



Tartu Ulikool
Estonia
www.ut.ee



Centrum Vedecko-Technických
Informácií Sr
Slovakia
www.cvtisr.sk



Danish Board Of Technology
Foundation (Dbt)
Denmark
www.tekno.dk



Informatikai, Távközlési És
Elektronikai Vállalkozások
Szövetsége
Hungary
ivsz.hu



Startup Division
Lithuania
www.startupdivision.eu



EFPC (UK) LTD
United Kingdom
www.efpcgroup.com



LOBA® CUSTOMER
EXPERIENCE
DESIGN

Globaz Sa
Portugal
www.loba.pt



Pedal Consulting Sro
Slovakia
www.pedal-consulting.eu



Consiglio Nazionale
delle Ricerche

Consiglio Nazionale
Delle Ricerche
Italy
www.cnr.it



Nexus Institut Für
Kooperationsmanagement Und
Interdisziplinäre Forschung
Germany
www.nexusinstitut.de

HUBIT

The HUB for boosting the Responsibility and inclusiveness of ICT enabled Research and Innovation through constructive interactions with SSH research

✉ info@hubit-project.eu

🔗 www.hubit-project.eu



This project has received funding from the European Union's Horizon 2020 research and innovation programme under grant agreement No 769497

THANK YOU!